

Environmental Consultants



Siddhi Green Excellence
Private Limited

"We are not Entrepreneurs, We are Enviropreneurs"



- NABL
 - FDA
 - GPCB
 - NABET
 - DISH
 - MoEF & CC
-



ABOUT OUR COMPANY

Rooted in Ankleshwar, Gujarat, the heart of Asia's largest industrial zone, Leader of Change Siddhi Green Excellence has served around 300 clients in GIDCs and SEZs all over Gujarat since 2 decades for – environmental management, occupational health and industrial safety; and is capable of assisting industries at any stage of development right from conceptualization to operation.

We can assist an industry at any of the development stage right from conceptualization to operation viz. project (plant designing, process & detail engineering, statutory approval (NOC, CC&A, EC, licences), production, EMS, Setup and management, safety, energy saving and conservation, pollution control, environmental conservation, etc.)



OUR FOUNDERS

The Perfect Blend of 3 P's with 3 E's

With the perfect blend of the 3 P's – Purpose, Passion & Perseverance, our Founders have paved the way to a Successful Environmental Management Company, serving its clients with 3 E's – Expertise, Environment & Equipment.



Mrs. Kuntal P. Shah (B.E.-Chemical)
Founder, Director & COO

Having an academic record of merits and gold medals, Kuntal has developed skills of self-learning and organization.

At Industry, her focus is on promoting automation of processes as much as possible, even for SSIs because it can directly increase the level of safety and product quality.

We call her “Finisher” as she gives her expert touch of quality and completeness to all our work.

Chemical Engineer by qualification, his passion to establish a business carved its way through the industrial slack period of 1997 and finally took shape as Siddhi Green Excellence.

Engineering background, field experience and thorough knowledge of environmental legislations make him an asset for the company.

His aim is to create opportunities for the youth of towns and villages.

Highly optimistic by nature, a family man with an ever-smiling personality, his presence creates an aura of happy environment at work and home.



Mr. Purvesh M. Shah (B.E.-Chemical)
Founder, MD & CEO



Our Staff

Siddhi Green Excellence Pvt. Ltd.

Under the empowering leadership of **Mrs. Kuntal P. Shah** , our engineering team and staff have flourished, with over **30+** accomplished **women** making significant contributions. Her visionary guidance fosters a workplace where women are encouraged to embrace their **strengths**, pursue excellence, and shatter glass ceilings. Through her **inspiration**, we celebrate diversity, nurturing an inclusive environment that empowers all to reach new heights. Her impact is a testament to the transformational force of **women empowerment**, inspiring generations to come.

OUR ACCREDITATIONS

NABL
ACCREDITED ENV.
LABORATORY TC - 5007

MoEF&CC
RECOGNIZED ENV. LABORATORY
UNDER EPA, 1986 valid upto 2024

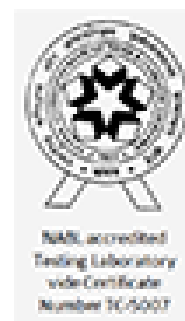
GPCB
RECOGNIZED
SCH II ENV. AUDITORS

NABET
ACCREDITED CATEGORY A
EIA CONSULTANTS

DISH
APPROVED TRAINING INSTITUTE
UNDER SECTION III - A(ii)

FDA
APPROVED PUBLIC
TESTING LABORATORY

DISH
Approved
Training Institute
Under Section III-A (ii)





OUR CLIENTELE



From the bustling streets of **India** to the far-reaching corners of the **globe**, our portfolio proudly reflects our **global presence** and impact. With **300+** related **clients** both at home and abroad, our journey of success transcends borders. Across borders and cultures, we've woven a tapestry of **innovation and collaboration**, creating lasting partnerships that know no bounds. Together, we bridge continents, making **dreams** a reality - **one project at a time.**

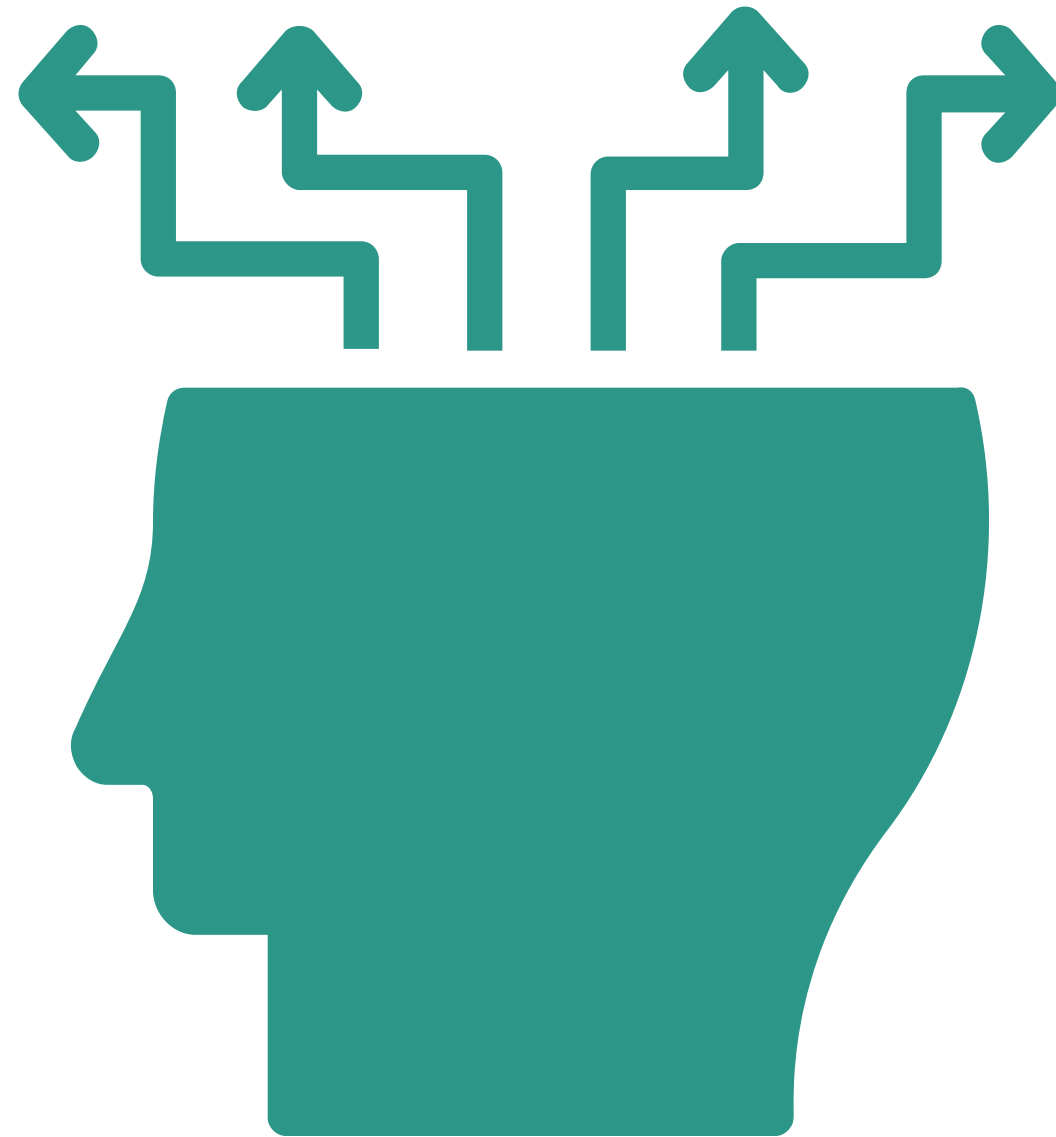




OUR STRENGTHS

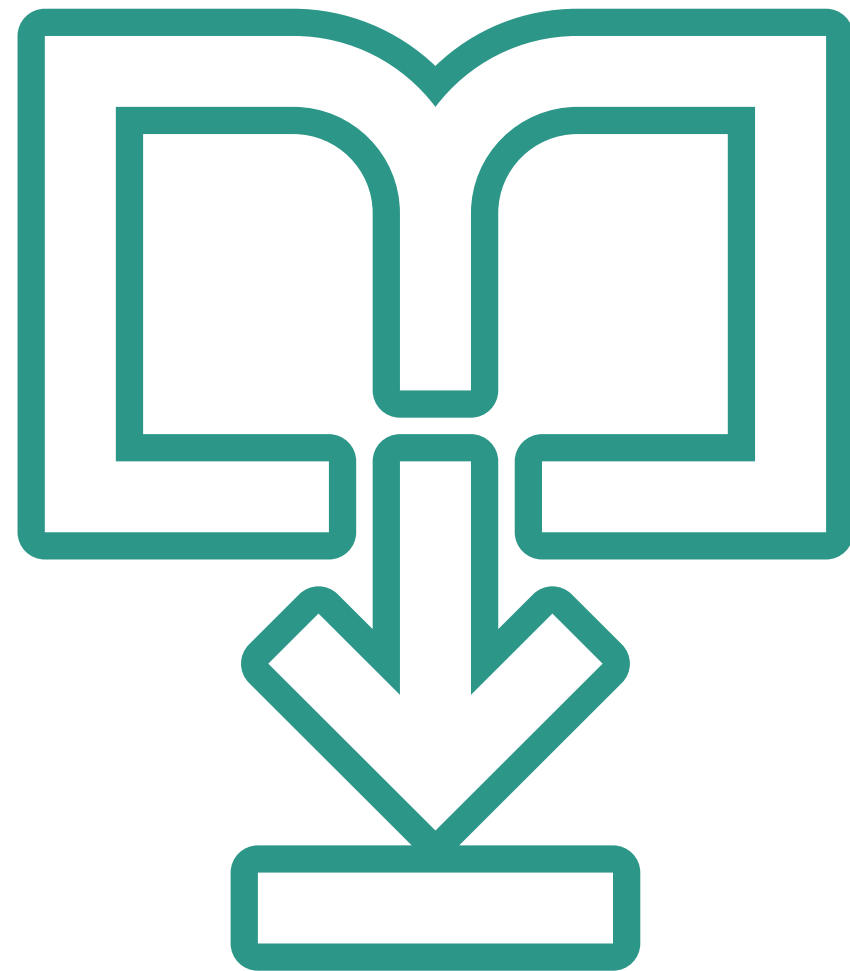
Our Expertise

We are capable of assisting industries at any stage of development right from conceptualization to operation. We are always on the look out for implementing Cleaner Production aspects in all our environmental studies, be it Environmental audit, EIAs or technical documentations for CTE or CTO. Our technical team of engineers and scientists have the Zeal & Expertise to convert a manufacturing process into an environment friendly manufacturing process



Analytical Capabilities

Strong Analytical capabilities with latest world-class equipment in our laboratory.



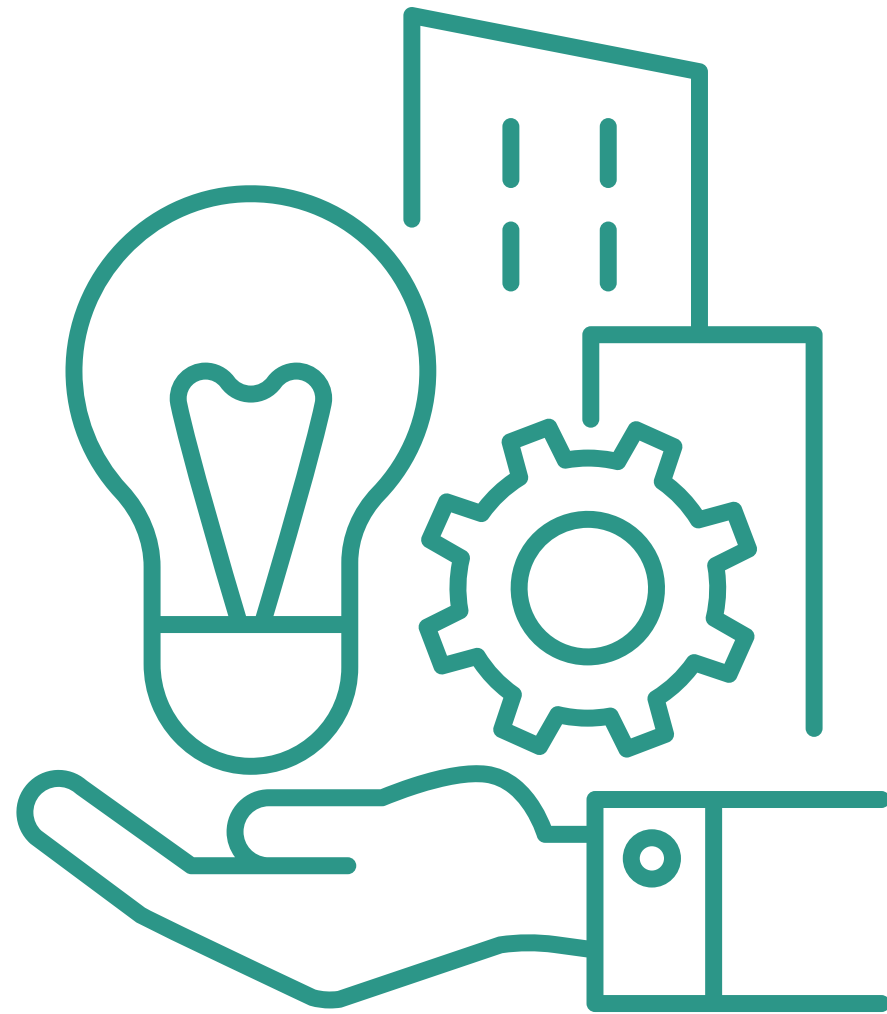
ETP Operations & Setup

Expertise in operations & setup of Effluent Treatment Plants all over Gujarat.



EIA Risk Assessment

Pioneering the Environmental Impact
Assessment – Risk Assessment Studies.



Our Assets

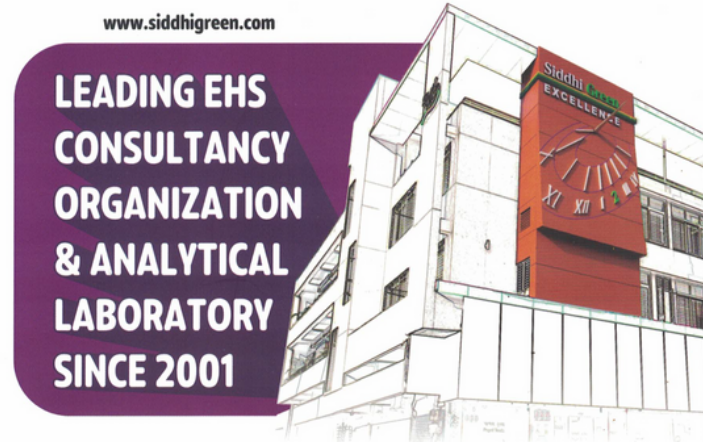
Solid backbone of our Qualified & trained Personnel, equipment & renowned accreditations.



OUR SERVICES



Lab Testing Facility



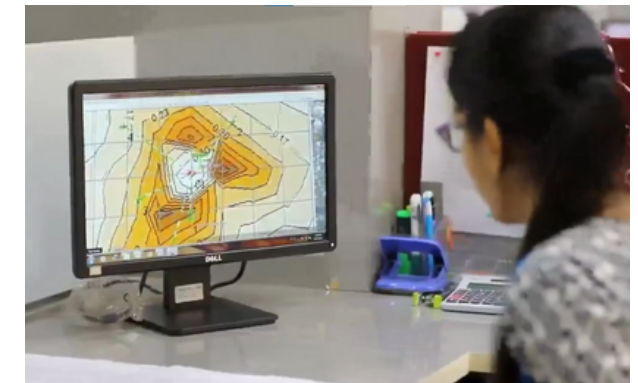
Environmental Consultancy



Safety Services



Training Services



EIA Studies



LAB TESTING FACILITY



Water & Wastewater Analysis

All kinds of Industrial & drinking water testing



Biological & Microbiological Testing

All kinds of biological & Microbiological testing & Analysis



Chemical & Physiochemical Testing

Different types of Chemical & Physiochemical Tests



Additional Laboratory Testing Services

Different types of Laboratory Testing Services done in our Lab

Water & Wastewater Analysis

We undertake all kinds of Industrial & drinking water testing and analysis. Here is a list of the Tests we conduct in our labs, related to water and wastewater analysis.

- **Industrial Effluents**
- **Domestic Effluents**
- **Potable water, Ground water, Surface water**
- **Distilled/ Demineralized water**
- **Drinking water analysis (IS 10500 : 2012)**
- **Package drinking water (IS 14543:2004)**
- **Package Natural Mineral water (IS 13428:2005)**



Biological & Microbiological Testing

- Total Coliform Count
- Microbial limits tests
- Bacterial endotoxin test (BET)
- Test for Pathogens E. Coli, S. aureus, Salmonellae, P. aeuroginasa, Shigella, Legionella, Candida sp., Aspergillus sp., Listeria sp., Bile Tolerant Gram Negative Bacteria
- Total Aerobic Microbial Count
- Microbial Assay
- Total Count
- Total Yeast & Mould Count
- Particulate testing
- Microbial contaminant identification
- Area Monitoring (Settle Plates, Air Sampling & Swab test)
- Sampling and analysis of water for pharmaceutical microbiology

Chemical & Physiochemical Testing of Pharmaceuticals

ASSAYS AND CHEMICAL TESTS

- UV/Vis
- AAS
- Chromatographic tests
- HPLC
- Identification of active
- Ingredients and impurities
- GC

PHYSICO-CHEMICAL DETERMINATIONS

- pH
- Melting point
- Flash point
- Loss on drying
- Limit tests
- Calorific value
- Hardness
- Heavy metals
- Dissolution
- Ash
- Residual solvents
- Disintegration



Additional Lab Testing Services

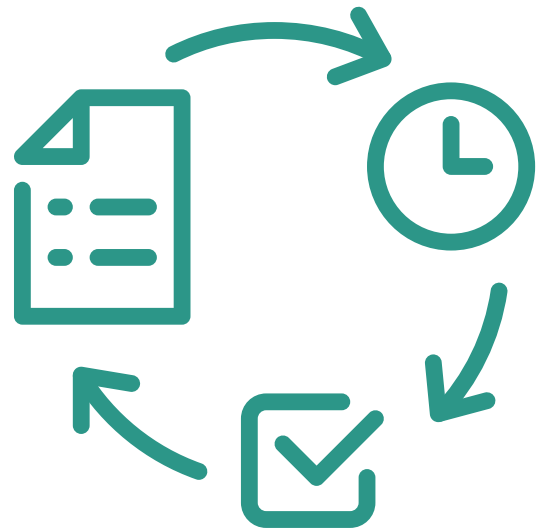
- Water Purification System Validation
- Ambient Air Monitoring Analysis
- Fuel Analysis
- Solid Waste Analysis
- Soil Analysis
- Industrial Hygiene & Work Area Monitoring

Additional Features

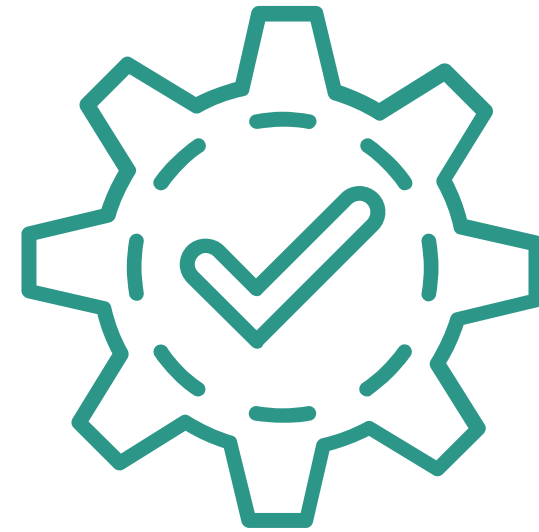
- Service at your doorstep
- Analytical Capabilities



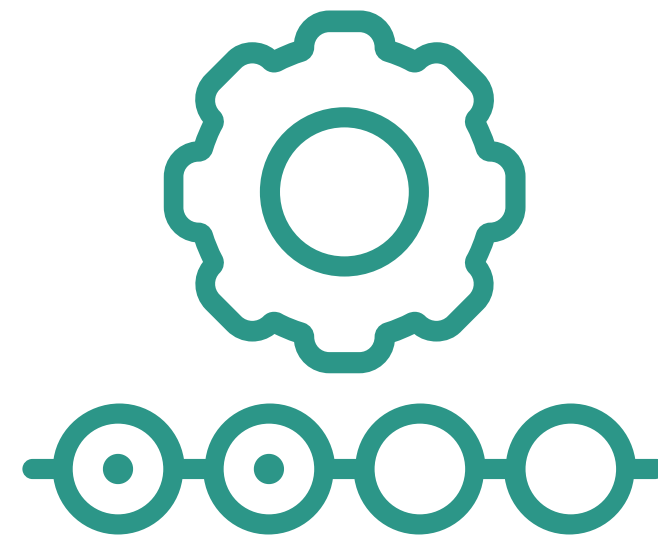
OUR ENVIRONMENTAL MANAGEMENT SOLUTIONS



PROJECT PHASE



**COMPLIANCES
RELATED TO EHS**



OPERATIONS PHASE



**EMS
IMPROVEMENT**



Project Phase

We undertake all kinds activities during the planning & project phase

- **Prior Environmental Clearance (EC)**
- **Six monthly EC compliance report**
- **EIA & Risk assessment**
- **Statutory approvals (CTE, CTO, Change in Product mix, CTO/CTE Amendment & Renewal)**
- **EMS adequacy certification**
- **Hazardous waste categorization and disposal**
- **Actual users for by-products, inorganic salts**
- **Safety Audits / HAZOP / HAZAN / Risk Analysis**



Compliances related to EHS

We undertake different kinds of compliances related to EHS

- **Environment Audits (Sch II industries)**
- **Six monthly EC compliance report**
- **Environmental Statement**
- **EMS evaluations and adequacy certification**
- **Safety Audits / HAZOP / HAZAN / Risk Analysis**
- **Competent Person testing and certification**
- **Monthly Patrak Filling on XGN & other XGN related work**



Operations Phase

We carry out various operational activities related to the Operational Phase of a business

- **ARC for Environmental monitoring, effluent analysis, WPM**
- **ETP /STP operation**
- **ETP /STP troubleshooting & resetup**
- **Change in product mix**
- **CTE for expansion**
- **Renewal of Statutory approvals**



EMS Improvement

We undertake different kinds of EMS Improvement activities

- **Water reuse & recycle options**
- **Zero Discharge Schemes**
- **Process changes for effluent reduction**
- **ETP modification**
- **Solid waste management**
- **Effluent segregation and reuse options**
- **Advanced treatment schemes**



OUR SAFETY SERVICES



Safety Training



Skill Development



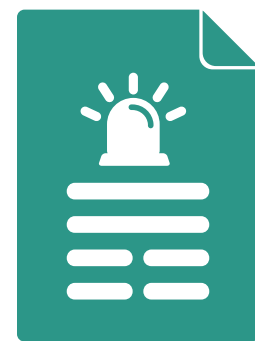
Expert Advice



Study of Processes



**Safety Audits
& Studies**



Emergency Plan



**Manuals &
Training Preparation**



Safety Mockdrills



TESTING & CERTIFICATION SERVICES



Certificate of Stability



**Testing & Certification
For Tools & Equipment**



**Equipment and manpower for
carrying out various tests**

Suggestions for improvement are also given by our competent persons based on their expertise gained during their course of service.



Certificate of Stability

- **We undertake examination and issue of certificate of stability which is mandatory for all factories having civil structures and buildings as per section 6 & 112 of Factories Act every five years.**
- **Our competent person is also Govt. Registered Valuer for valuation of civil structures, buildings, etc.**

Testing & Certification For Tools & Equipment

As per Factories Act 1948, we provide Testing & Certifications for:

- **Lifting Tools And Tackles (section 29)**
- **Hoists & Lifts (Section 28)**
- **Pressure Vessels (Section 31)**
- **Dangerous Machinery (Centrifuge, Power Press Etc.-Section 21)**

Equipment and manpower for carrying out various tests

We provide complete equipment and manpower for carrying out various tests including:

- External examination
- Internal examination
- Hydraulic/Pneumatic test
- Ultrasonic thickness measurement (NDT)

Other Testing & Certification Services

- Chartered engg. Certificate
- Valuation of plant & machinery by Govt. approved Valuer



OUR TRAINING SERVICES

Knowledge Enclave

“Knowledge Enclave” – Our Division for Trainings, Lectures, Seminars, Conferences

Our training program prioritizes workplace safety and equips employees with the knowledge and skills needed to create a secure work environment. With a focus on industry best practices and tailored approaches, we ensure that participants gain valuable insights and practical strategies to mitigate risks effectively.

Some glimpse of our General Safety Training





EIA STUDIES

Siddhi Green Excellence Private Limited are the first consultant from Bharuch district to be granted accreditation as EIA Consultant Organization by NABET for the project sectors – pesticides and pesticide specific intermediates (17) and synthetic organic industry (21) in Category A.

We carry out EIA and Risk assessment studies as per the guidelines and formats of MoEF and SEAC incorporating all necessary environmental aspects and risk scenarios using latest risk assessment and air modeling softwares.

Our EIA Study Services

We have inhouse facilities for Baseline Studies of :-

- **Meteorology**
- **Water Quality**
- **Ambient Air**
- **Quality**
- **Socio-economic**
- **Noise levels**
- **Ecology**
- **Geology**
- **Soil**
- **Land Use**

We also undertake individual assignments of Baseline studies.



Siddhi Green Excellence
Private Limited
"We are not Entrepreneurs, We are Enviropreneurs"

Excellence and Beyond...

Empower Your Safety Culture with Expert EHS Consulting

Address:

"Kamal Arcade – The Vertical Sunclock", Comm.
Plot No. C-3/3, Nr. SBI Industrial Branch, GIDC
Station Road, Ankleshwar – 393 002, Bharuch,
Gujarat (India)

Email id:

siddhi.ank@gmail.com

Contact No:

9824345895

Website:

siddhigreen.com

Follow us on:

